

Supervisory Management

Five Year Trend

Five Year Enrollment Change	3.4%		FY 2008 FTEs	116.60
Five Year FTEs Change	10.8%		FY 2009 FTEs	98.73
Five Year Graduate Change	3.2%		FY 2010 FTEs	99.30
FY 2007 Enrollee	238		FY 2011 FTEs	111.57
FY 2008 Enrollee	243		FY 2007 Graduate	31
FY 2009 Enrollee	218		FY 2008 Graduate	26
FY 2010 Enrollee	200		FY 2009 Graduate	42
FY 2011 Enrollee	246		FY 2010 Graduate	27
FY 2007 FTEs	100.65		FY 2011 Graduate	32

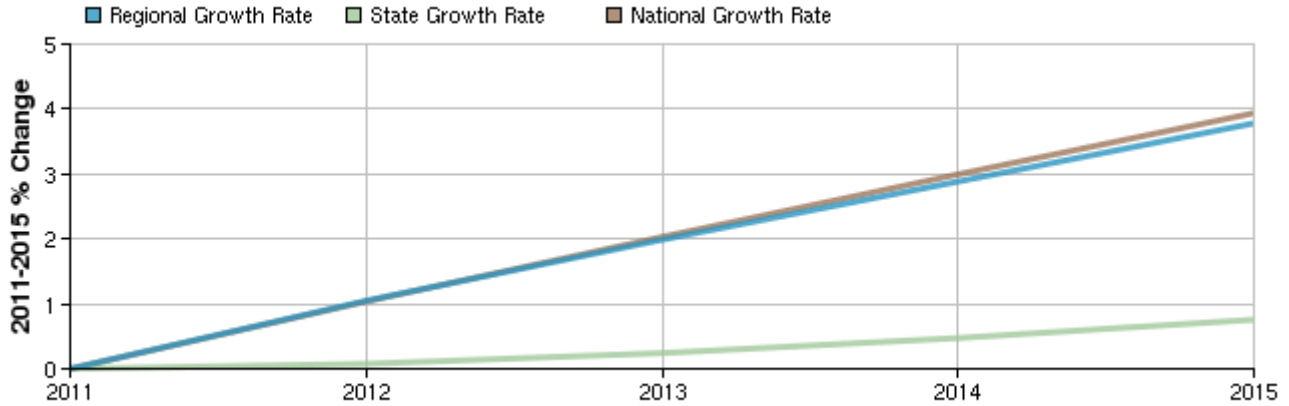
Selected Occupations

Occupation	Education Level
First-line supervisors/managers of housekeeping and janitorial workers (SOC 37-1011)	Work experience in a related field
First-line supervisors/managers of retail sales workers (SOC 41-1011)	Work experience in a related field
First-line supervisors/managers of non-retail sales workers (SOC 41-1012)	Work experience in a related field
First-line supervisors/managers of office and administrative support workers (SOC 43-1011)	Work experience in a related field
First-line supervisors/managers of construction trades and extraction workers (SOC 47-1011)	Work experience in a related field
First-line supervisors/managers of production and operating workers (SOC 51-1011)	Work experience in a related field

Executive Summary

Basic Information	
2011 Occupational Jobs	6,936
2015 Occupational Jobs	7,198
Total Change	262
Total % Change	3.79%
Openings	853
2011 Median Hourly Earnings	\$16.52

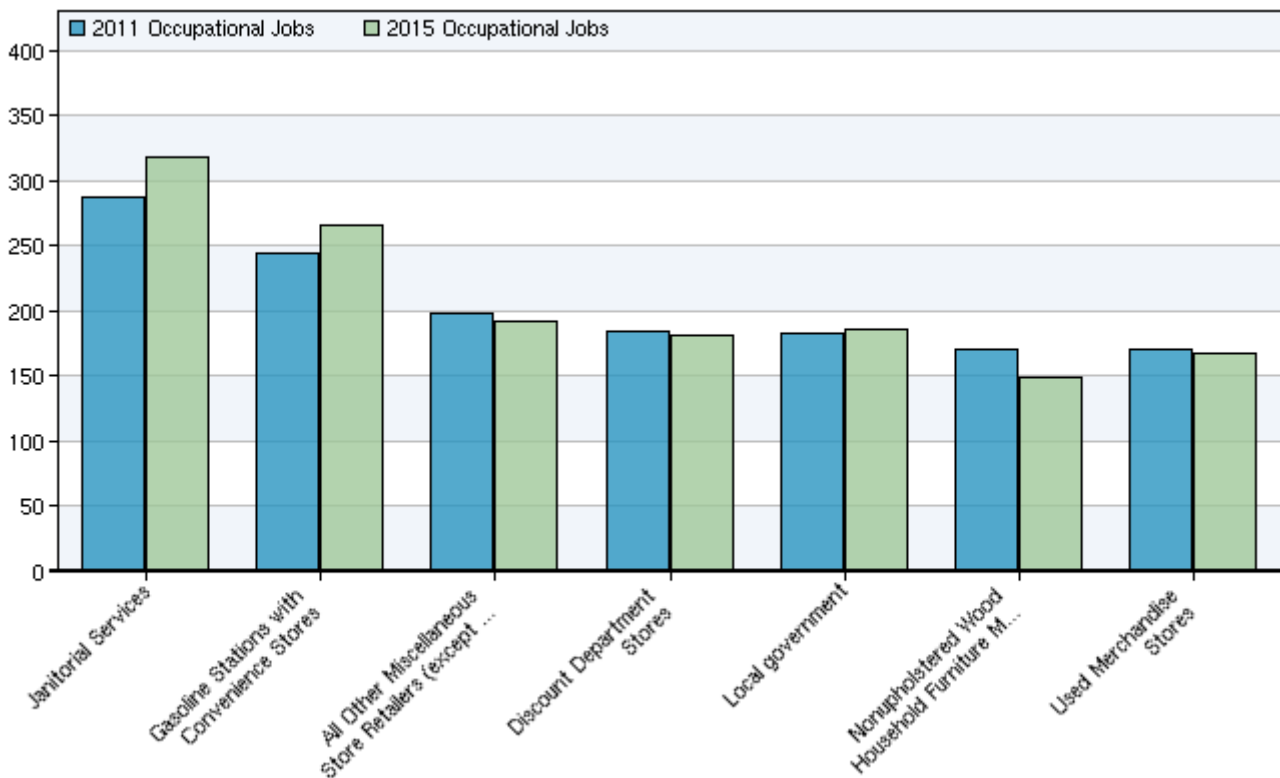
Occupational Change Summary



Region	2011 Jobs	2015 Jobs	Change	% Change	Openings	2011 Median Hourly Earnings
Regional Total	6,936	7,198	262	4%	853	\$16.52
State Total	124,341	125,282	941	1%	13,076	\$18.25
National Total	6,846,375	7,115,949	269,574	4%	874,016	\$19.20

Source: EMSI Complete Employment - 2011.3

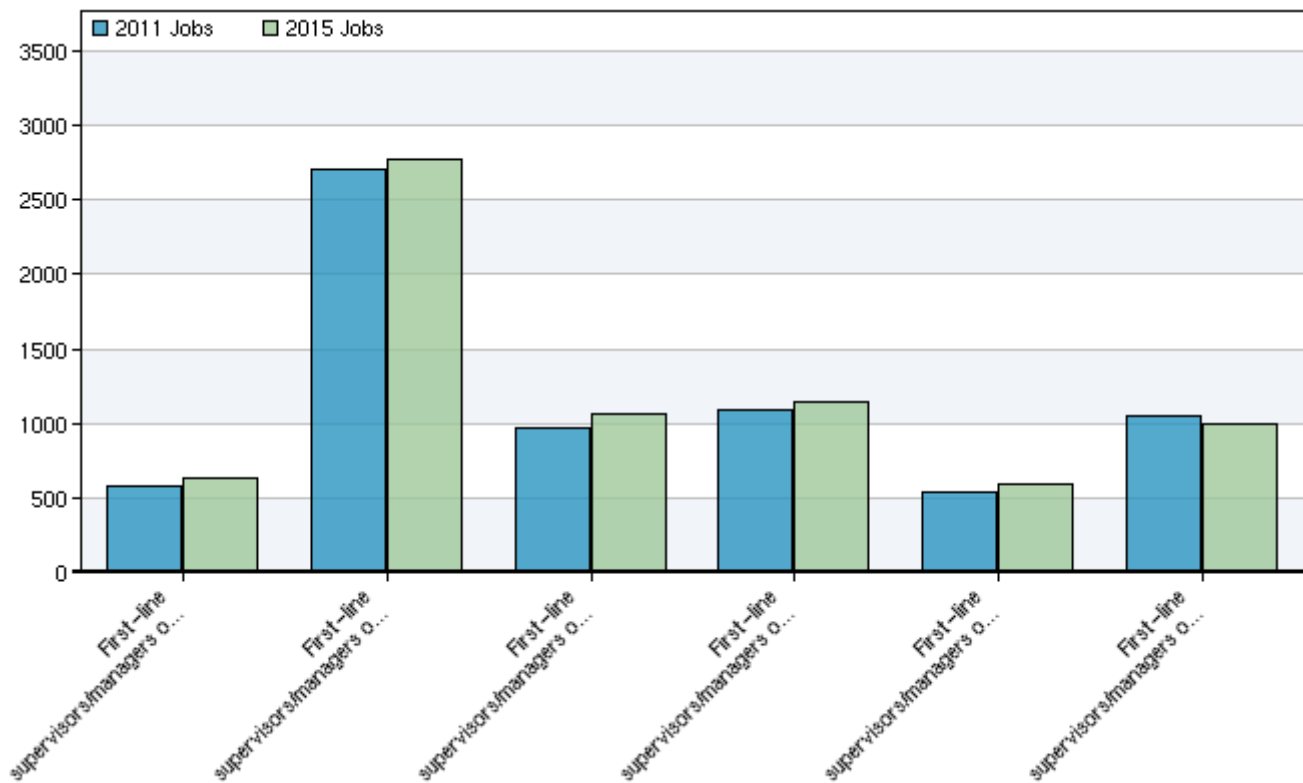
Top Industries for Selected Occupations



NAICS Code	Name	2011 Jobs	2015 Jobs	Change	% Change
561720	Janitorial Services	288	319	31	11%
447110	Gasoline Stations with Convenience Stores	245	266	21	9%
453998	All Other Miscellaneous Store Retailers (except Tobacco Stores)	198	193	-5	-3%
452112	Discount Department Stores	184	181	-3	-2%
930000	Local government	183	185	2	1%
337122	No upholstered Wood Household Furniture Manufacturing	171	150	-21	-12%
453310	Used Merchandise Stores	171	168	-3	-2%

Source: EMSI Complete Employment - 2011.3

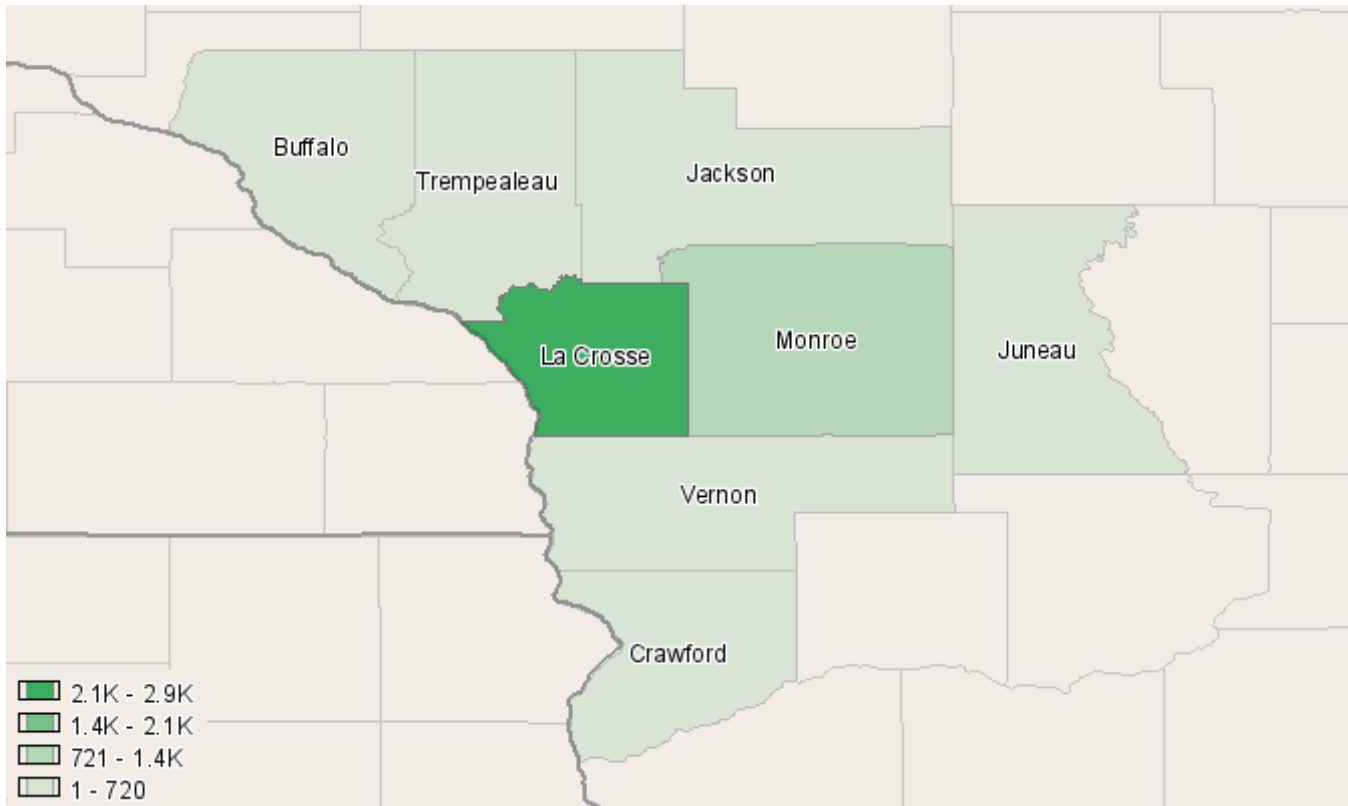
Occupational Breakdown



SOC Code	Description	2011 Jobs	2015 Jobs	Openings	2011 Median Hourly Earnings
37-1011	First-line supervisors/managers of housekeeping and janitorial workers	577	635	82	\$10.52
41-1011	First-line supervisors/managers of retail sales workers	2,707	2,771	297	\$12.11
41-1012	First-line supervisors/managers of non-retail sales workers	975	1,058	163	\$18.30
43-1011	First-line supervisors/managers of office and administrative support workers	1,092	1,150	156	\$19.94
47-1011	First-line supervisors/managers of construction trades and extraction workers	537	587	91	\$22.81
51-1011	First-line supervisors/managers of production and operating workers	1,047	997	63	\$22.79
	Total	6,936	7,198	853	\$16.52

Source: EMSI Complete Employment - 2011.3

Occupation Distribution



County	2011 Jobs
La Crosse, WI (55063)	2,868
Monroe, WI (55081)	985
Trempealeau, WI (55121)	615
Crawford, WI (55023)	539
Vernon, WI (55123)	527
Juneau, WI (55057)	511
Jackson, WI (55053)	488
Buffalo, WI (55011)	404

Source: EMSI Complete Employment - 2011.3

Three Year Graduate Employers

Supervisory Management

2007-2008

Graduates	26
Graduates Responding	23
Employed in Related Occupations	17
Employed in Non-Related Occupations	5
Seeking Employment	0
Not in Labor Market	1

Administrative Assistant	Castle Rock Realty, Mauston, WI
Supervisor	Ashley Furniture, Arcadia, WI
Logistics Manager	S & S Cycle, Inc., Viola, WI
Team Leader	Logistics Health, La Crosse, WI
Operations Manager	Per Mar Security Services, Madison, WI
Target Systems Supervisor	Department Of Army, Sparta, WI
Office Manager	Proksch Transit, Stoddard, WI
Floor Supervisor	CenturyTel, La Crosse, WI
RV Technician	FMB Trailer Sales, Holmen, WI
Leadman	Brenner Mfg Co, Mauston, WI
Title Insurance Agent	Landmark Title Co, Black River Falls, WI
Assistant Manager	Good Times Restaurant & Bar, Caledonia, MN
Owner	Mielke Recruiting, Onalaska, WI
Personal Banker	Associated Bank, La Crosse, WI
Assistant Manager	Microtel Inn & Suites, Tomah, WI
MIS Tech/Environmental Manager	Trempealeau County Health Care Center, Whitehall, WI
Lead Technician	De Bauche Truck & Diesel, La Crosse, WI

2008-2009

Graduates	43
Graduates Responding	28
Employed in Related Occupations	19
Employed in Non-Related Occupations	8
Seeking Employment	1
Not in Labor Market	0

Account Manager/Marketing	Five Star Telecom, Inc., Onalaska, WI
Collections Manager	The Berry Company, Onalaska, WI
Federal Program Director	Ho-Chunk Nation, Black River Falls, WI
Hotel Manager	Majestic Pines Hotel, Black River Falls, WI
Line Worker	Ashley Furniture, Arcadia, WI
Office Administrator	Supply Chain Solutions, Inc., La Crosse, WI
Office Lead	Tomah Memorial Hospital, Tomah, WI
Operations Support Manager	Exopack, Tomah, WI
Owner/Operator	BCB Corp., La Crosse, WI

Quality and Performance Manager	Cardinal IG, Tomah, WI
Rail Fleet Manager	Texlar Energy LLC, Onalaska, WI
Sales/Manager	Hi Way Motors, La Crescent, MN
Secretary	Western Wisconsin Cares, Blair, WI
Service Manager	Tires Plus, Oak Creek, WI
Tempering Supervisor	Cardinal IG, Tomah, WI
Training Consultant	Western Technical College, La Crosse, WI
Wholesale	Reinhart Food Service, La Crosse, WI

2009-2010

Graduates	31
Graduates Responding	29
Employed in Related Occupations	13
Employed in Non-Related Occupations	9
Seeking Employment	1
Not in Labor Market	1
Continuing Education	5

Administrative Assistant-HR	Atlas Resin Proppants LLC, Taylor, WI
Area Manager	Wal-Mart Stores Inc, Tomah, WI
ART Manager	DuraTech, La Crosse, WI
Assistant Manager	Courtesy Corp/McDonald's, Mauston, WI
Jail Sergeant	Trempealeau County Sheriffs Dept, Whitehall, WI
Maintenance Worker	US Fish & Wildlife, Onalaska, WI
Management	ADM, Casselton, ND
Office Manager	Wares & Wheels Inc., La Crosse, WI
Quality Management Coordinator	Western Wisconsin Cares, La Crosse, WI
Staffing Specialist	Manpower, Tomah, WI
Training & Development Director	Ho-Chunk Nation, Black River Falls, WI
Work Site Coordinator	ABC Woodland Industries, Caledonia, MN

Region Information

Region: Western Technical College District

Description: Western District Counties

County Areas: Buffalo, Wisconsin (55011), Crawford, Wisconsin (55023), Jackson, Wisconsin (55053), Juneau, Wisconsin (55057), La Crosse, Wisconsin (55063), Monroe, Wisconsin (55081), Trempealeau, Wisconsin (55121), Vernon, Wisconsin (55123)

Data Sources and Calculations

Industry Data

In order to capture a complete picture of industry employment, EMSI basically combines covered employment data from Quarterly Census of Employment and Wages (QCEW) produced by the Department of Labor with total employment data in Regional Economic Information System (REIS) published by the Bureau of Economic Analysis (BEA), augmented with County Business Patterns (CBP) and Non-employer Statistics (NES) published by the U.S. Census Bureau. Projections are based on the latest available EMSI industry data, 15-year past local trends in each industry, growth rates in statewide and (where available) sub-state area industry projections published by individual state agencies, and (in part) growth rates in national projections from the Bureau of Labor Statistics.

Occupational Data

Organizing regional employment information by occupation provides a workforce-oriented view of the regional economy. EMSI's occupation data are based on EMSI's industry data and regional staffing patterns taken from the Occupational Employment Statistics program (U.S. Bureau of Labor Statistics). Wage information is partially derived from the American Community Survey. The occupation-to-program (SOC-to-CIP) crosswalk is based on one from the U.S. Department of Education, with customizations by EMSI.

State Data Sources

This report uses state data from the following agencies:

- Wisconsin Department of Workforce Development
- Bureau of Workforce Information