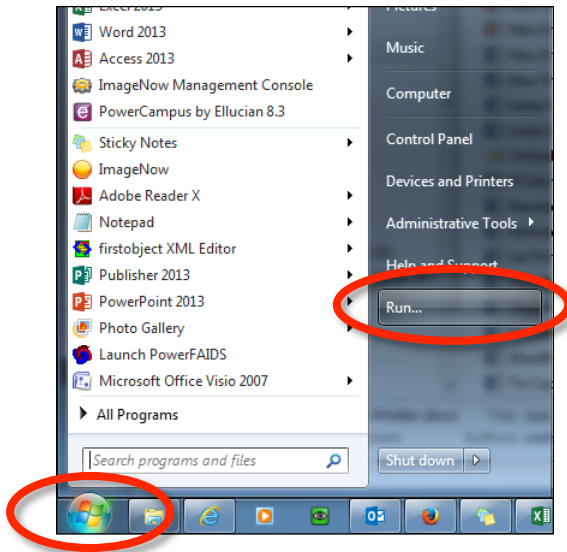
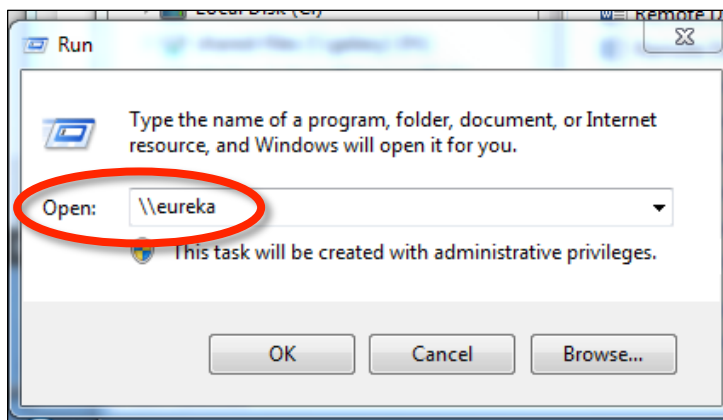


Installing a Network Printer

1. Click the *Start* Button.
2. Click *Run*.



3. Enter `\\eureka` in the *Open:* section and click *OK*.



4. A window with a list of printer names will open.
 - a. Double-click on the name of the printer you need to install.
 - b. Select *Yes* if asked to allow the printer driver to be installed.
 - c. The print queue window for the printer will appear after the printer is installed.
5. When the print queue window opens, click on *Printer* from the menu and click *Set as Default* to make this your default printer.