

Finance

Five Year Trend

Five Year Enrollment Change	-68.4%		FY 2008 FTEs	54.86
Five Year FTEs Change	-70.0%		FY 2009 FTEs	40.60
Five Year Graduate Change	-43.8%		FY 2010 FTEs	32.83
FY 2007 Enrollee	98		FY 2011 FTEs	17.80
FY 2008 Enrollee	98		FY 2007 Graduate	16
FY 2009 Enrollee	66		FY 2008 Graduate	10
FY 2010 Enrollee	61		FY 2009 Graduate	13
FY 2011 Enrollee	31		FY 2010 Graduate	10
FY 2007 FTEs	59.36		FY 2011 Graduate	9

Five Year Enrollment Change			FY 2008 FTEs	0.00
Five Year FTEs Change			FY 2009 FTEs	0.00
Five Year Graduate Change			FY 2010 FTEs	0.00
FY 2007 Enrollee	0		FY 2011 FTEs	8.90
FY 2008 Enrollee	0		FY 2007 Graduate	0
FY 2009 Enrollee	0		FY 2008 Graduate	0
FY 2010 Enrollee	0		FY 2009 Graduate	0
FY 2011 Enrollee	16		FY 2010 Graduate	0
FY 2007 FTEs	0.00		FY 2011 Graduate	0

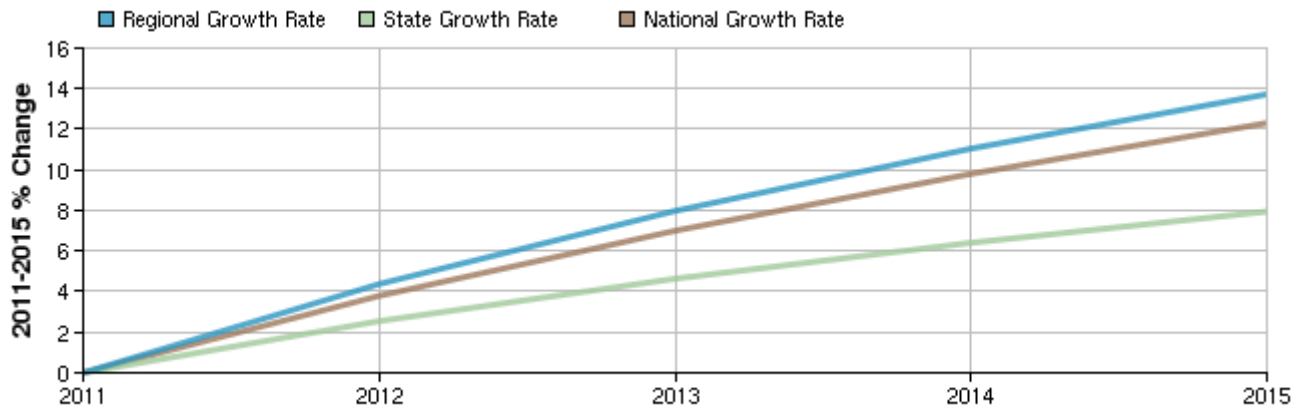
Selected Occupations

Occupation	Education Level
Claims adjusters, examiners, and investigators (SOC 13-1031)	Long-term on-the-job training
Insurance appraisers, auto damage (SOC 13-1032)	Long-term on-the-job training
Credit analysts (SOC 13-2041)	Bachelor's degree
Personal financial advisors (SOC 13-2052)	Bachelor's degree
Loan counselors (SOC 13-2071)	Bachelor's degree
Loan officers (SOC 13-2072)	Bachelor's degree
Insurance sales agents (SOC 41-3021)	Bachelor's degree
Securities, commodities, and financial services sales agents (SOC 41-3031)	Bachelor's degree
Tellers (SOC 43-3071)	Short-term on-the-job training
Brokerage clerks (SOC 43-4011)	Moderate-term on-the-job training
Credit authorizers, checkers, and clerks (SOC 43-4041)	Short-term on-the-job training
Loan interviewers and clerks (SOC 43-4131)	Short-term on-the-job training
Insurance claims and policy processing clerks (SOC 43-9041)	Moderate-term on-the-job training

Executive Summary

Basic Information	
2011 Occupational Jobs	4,248
2015 Occupational Jobs	4,831
Total Change	583
Total % Change	13.72%
Openings	1,019
2011 Median Hourly Earnings	\$13.72

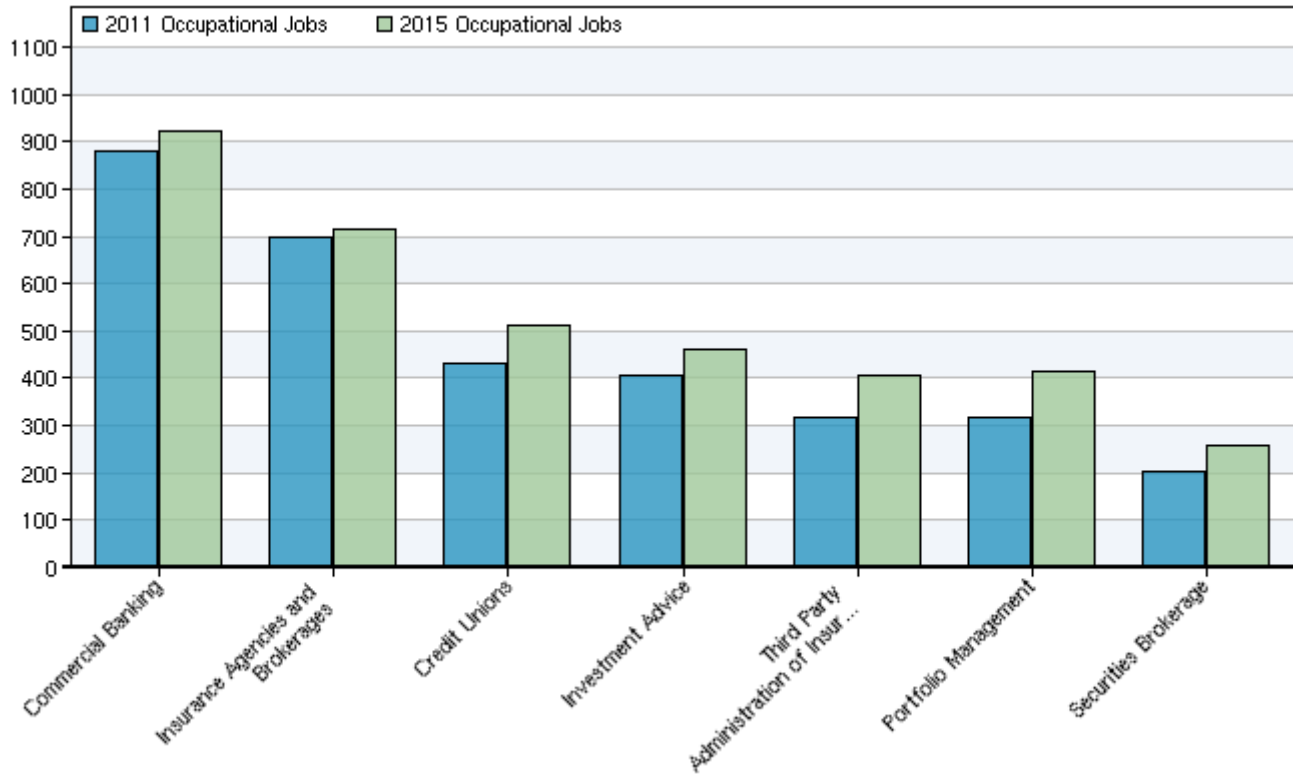
Occupational Change Summary



Region	2011 Jobs	2015 Jobs	Change	% Change	Openings	2011 Median Hourly Earnings
Regional Total	4,248	4,831	583	14%	1,019	\$13.72
State Total	90,887	98,109	7,222	8%	16,624	\$15.89
National Total	4,942,477	5,550,810	608,333	12%	1,090,454	\$18.76

Source: EMSI Complete Employment - 2011.3

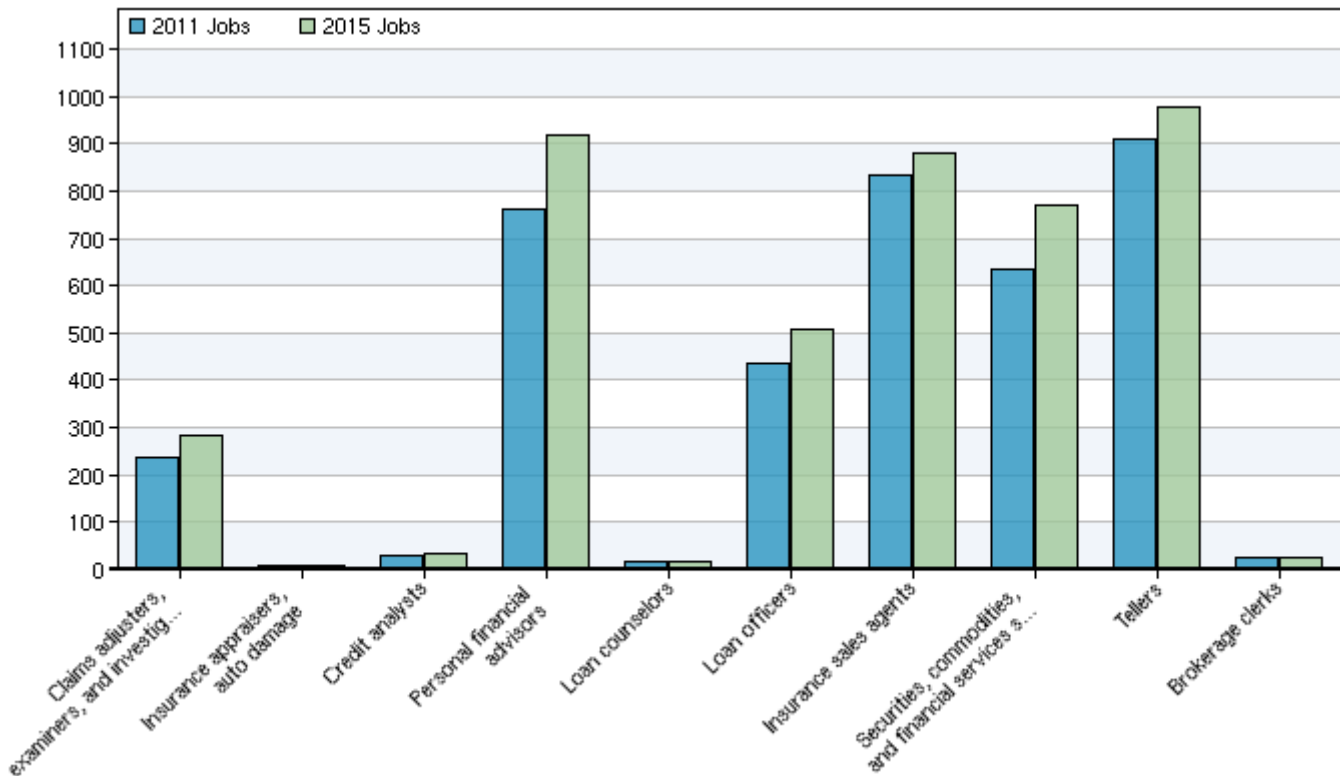
Top Industries for Selected Occupations



NAICS Code	Name	2011 Jobs	2015 Jobs	Change	% Change
522110	Commercial Banking	879	923	44	5%
524210	Insurance Agencies and Brokerages	696	717	21	3%
522130	Credit Unions	430	511	81	19%
523930	Investment Advice	408	461	53	13%
524292	Third Party Administration of Insurance and Pension Funds	319	405	86	27%
523920	Portfolio Management	318	416	98	31%
523120	Securities Brokerage	202	257	55	27%

Source: EMSI Complete Employment - 2011.3

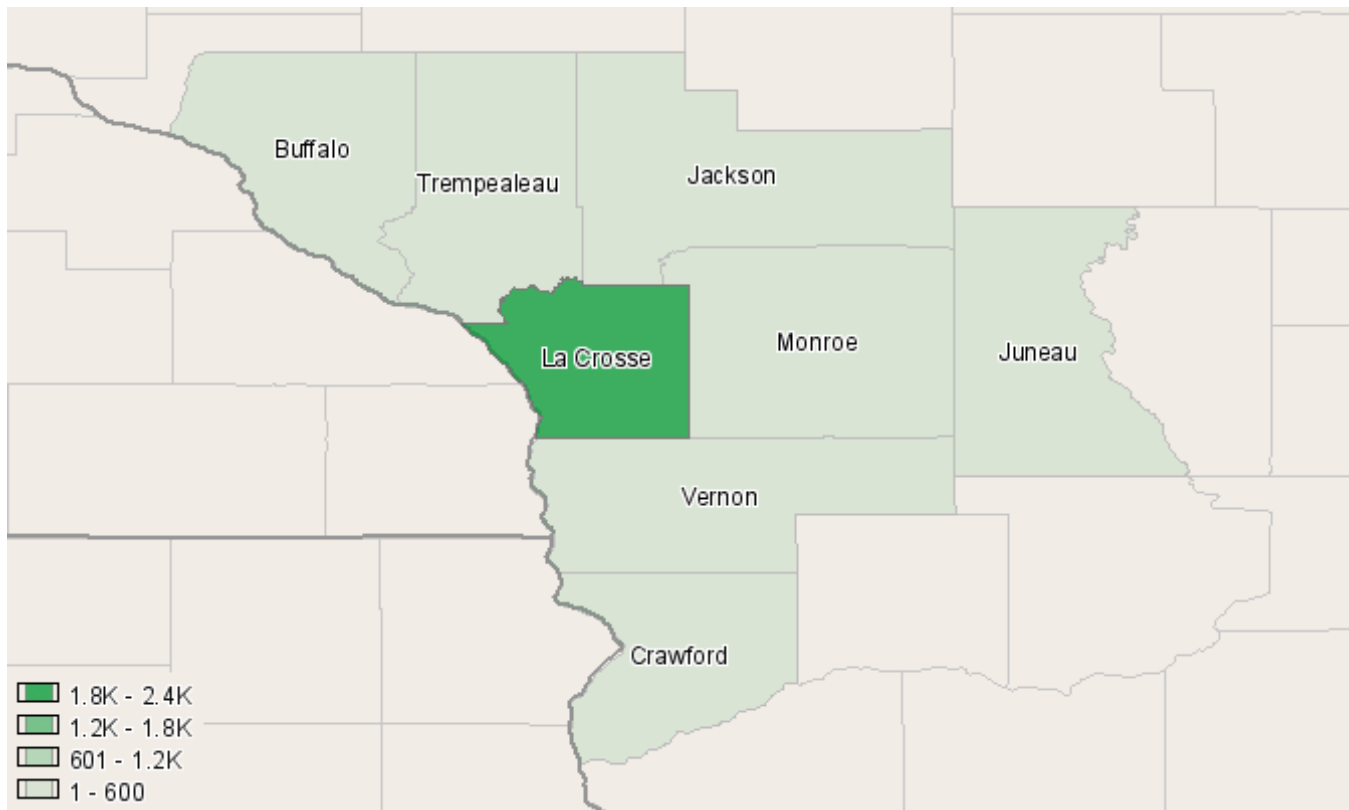
Occupational Breakdown



SOC Code	Description	2011 Jobs	2015 Jobs	Openings	2011 Median Hourly Earnings
13-1031	Claims adjusters, examiners, and investigators	236	283	71	\$21.21
13-1032	Insurance appraisers, auto damage	<10	<10	--	--
13-2041	Credit analysts	31	35	6	\$22.01
13-2052	Personal financial advisors	762	918	190	\$11.31
13-2071	Loan counselors	16	19	4	\$13.93
13-2072	Loan officers	435	507	91	\$21.09
41-3021	Insurance sales agents	831	880	140	\$11.98
41-3031	Securities, commodities, and financial services sales agents	634	770	214	\$12.54
43-3071	Tellers	909	979	225	\$11.54
43-4011	Brokerage clerks	25	27	5	\$16.40
43-4041	Credit authorizers, checkers, and clerks	45	48	8	\$16.64
43-4131	Loan interviewers and clerks	129	144	28	\$14.48
43-9041	Insurance claims and policy processing clerks	186	210	36	\$16.07
	Total	4,248	4,831	1,019	\$13.72

Source: EMSI Complete Employment - 2011.3

Occupation Distribution



County	2011 Jobs
La Crosse, WI (55063)	2,396
Monroe, WI (55081)	491
Vernon, WI (55123)	292
Trempealeau, WI (55121)	268
Buffalo, WI (55011)	250
Juneau, WI (55057)	221
Crawford, WI (55023)	172
Jackson, WI (55053)	159

Source: EMSI Complete Employment - 2011.3

Three Year Graduate Employers

Finance

2007-2008

Graduates	13
Graduates Responding	10
Employed in Related Occupations	7
Employed in Non-Related Occupations	1
Seeking Employment	1
Not in Labor Market	1

Tax Preparation	Reinhart Food Service, La Crosse, WI
Teller/Loans	Independence State Bank, Independence, WI
Indirect Processor	Marine Credit Union, La Crosse, WI
Head Teller & Personal Banker	Citizen's State Bank, La Crosse, WI
Military Pay Tech	Fort McCoy, WI
Teller	Associated Bank, Onalaska, WI
Night Auditor	Radisson Hotel La Crosse, La Crosse, WI

2008-2009

Graduates	13
Graduates Responding	11
Employed in Related Occupations	5
Employed in Non-Related Occupations	3
Seeking Employment	1
Not in Labor Market	2

Facility Manager	Midwest Garment, Sparta, WI
Loan Officer	Co-op Credit Union, Black River Falls, WI
Owner	Cade's Corner Holsteins, Westby, WI
Teller	Altra Federal Credit Union, La Crosse, WI
Work Director	Associated Bank, La Crosse, WI

2009-2010

Graduates	10
Graduates Responding	9
Employed in Related Occupations	7
Employed in Non-Related Occupations	2
Seeking Employment	0
Continuing Education	0
Not in Labor Market	0

Business Lending Member Relations Specialist	Altra Federal Credit Union, La Crosse, WI
Customer Service	Kaplan Professional Education, La Crosse, WI
Financial Development Officer	First Nations Community Financial, Tomah, WI
Member Service Rep.	1st CCU, West Salem, WI
Staff Accountant	Community Credit Union, Onalaska, WI
Teller	Wachovia, Annapolis, MD

Region Information

Region: Western Technical College District

Description: Western District Counties

County Areas: Buffalo, Wisconsin (55011), Crawford, Wisconsin (55023), Jackson, Wisconsin (55053), Juneau, Wisconsin (55057), La Crosse, Wisconsin (55063), Monroe, Wisconsin (55081), Trempealeau, Wisconsin (55121), Vernon, Wisconsin (55123)

Data Sources and Calculations

Industry Data

In order to capture a complete picture of industry employment, EMSI basically combines covered employment data from Quarterly Census of Employment and Wages (QCEW) produced by the Department of Labor with total employment data in Regional Economic Information System (REIS) published by the Bureau of Economic Analysis (BEA), augmented with County Business Patterns (CBP) and Non-employer Statistics (NES) published by the U.S. Census Bureau. Projections are based on the latest available EMSI industry data, 15-year past local trends in each industry, growth rates in statewide and (where available) sub-state area industry projections published by individual state agencies, and (in part) growth rates in national projections from the Bureau of Labor Statistics.

Occupational Data

Organizing regional employment information by occupation provides a workforce-oriented view of the regional economy. EMSI's occupation data are based on EMSI's industry data and regional staffing patterns taken from the Occupational Employment Statistics program (U.S. Bureau of Labor Statistics). Wage information is partially derived from the American Community Survey. The occupation-to-program (SOC-to-CIP) crosswalk is based on one from the U.S. Department of Education, with customizations by EMSI.

State Data Sources

This report uses state data from the following agencies:

- Wisconsin Department of Workforce Development
- Bureau of Workforce Information