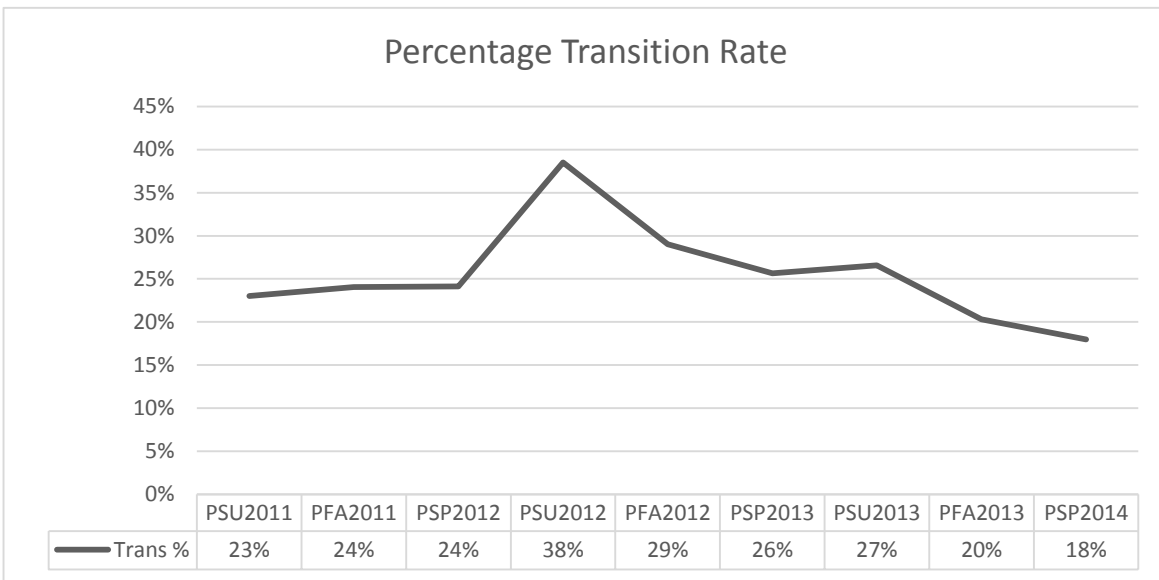


# Transition to Credit Classes

What percentage of students in Learner Support transfer to credit classes?

For the years 2011-2014

## Adult Basic Ed



|                           | SU11 | FA11 | SP12 | SU12 | FA12 | SP13 | SU13 | FA13 | SP14 |
|---------------------------|------|------|------|------|------|------|------|------|------|
| <b>Number of Students</b> | 239  | 403  | 456  | 239  | 355  | 456  | 173  | 315  | 278  |

- 'Number of students' is the number of students who enrolled in a Learner Support Class for the listed term. These students were not students at Western in any of the three previous terms.
- The percentage value represented by the line in the graph is the overall transition rate. These are students who took a credit class during the term listed or any of the three following terms
- Adult Basic Ed is students enrolled in classes that use aid codes 73 and 74
- English Language Learner is students enrolled in classes that use aid codes 75
- High School is students enrolled in classes that use aid code 76
- Developmental students enrolled in classes that use aid code 77