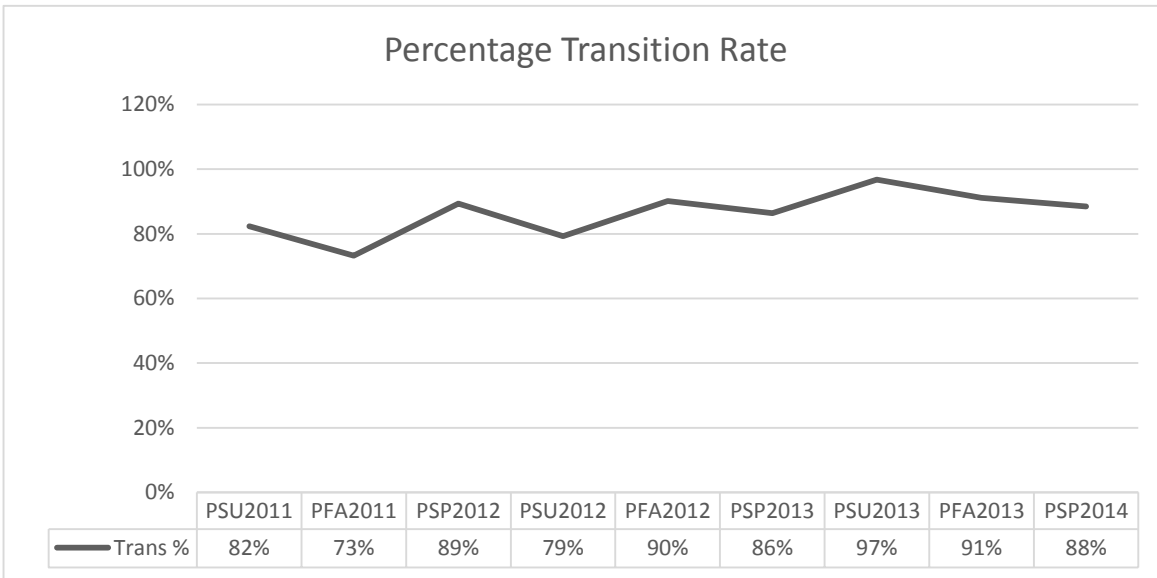


Transition to Credit Classes

What percentage of students in Learner Support transfer to credit classes?

For the years 2011-2014

Developmental



	SU11	FA11	SP12	SU12	FA12	SP13	SU13	FA13	SP14
Number of Students	34	153	131	29	132	125	31	113	95

- 'Number of students' is the number of students who enrolled in a Learner Support Class for the listed term. These students were not students at Western in any of the three previous terms.
- The percentage value represented by the line in the graph is the overall transition rate. These are students who took a credit class during the term listed or any of the three following terms
- Adult Basic Ed is students enrolled in classes that use aid codes 73 and 74
- English Language Learner is students enrolled in classes that use aid codes 75
- High School is students enrolled in classes that use aid code 76
- Developmental students enrolled in classes that use aid code 77